

Print Stories

Safe and Beautiful

since 1985



Pamaz[®]



Why choose Panaz

A very warm welcome to the first edition of Print Stories, a curated collection of some of our most popular printed designs all of which are available on a wide range of basecloth fabrics.

Panaz has been dedicated to the supply of commercial and contract fabrics for over 30 years, we deliver to our customers, not only great design but reassurance that the fabrics will stand the test of time in busy commercial environments. As innovators in fabric performance, we offer inherently fire-retardant fabrics suitable for soft furnishings and upholstery plus an antimicrobial coating that instantly kills hospital acquired infections including Coronavirus and C Difficile. Based in Lancashire, our digital print machinery is revolutionary; using dry printing techniques, it produces not only the finest quality prints but is also safe for the environment, reaffirming our industry leading sustainability credentials.

Safe and Beautiful
since 1985

Contents

4 Our print process

Our print stories

6	<i>Story One</i> Gardenia Dela Elisa Elvina Sophia Tiana	18	<i>Story Four</i> Delamere Felsham Langley Trentham Odell Arley	32	<i>Story Seven</i> Seascape Seascape
10	<i>Story Two</i> Folklore Rubus Filigree Evelyn Fable Arbor	22	<i>Story Five</i> Aviemore & Provence Alder Stripe Lomond Kinloch Balintore Fraser Cassley	34	Printed Plains
14	<i>Story Three</i> Hoxton Finsbury Pimlico Camden Balham	28	<i>Story Six</i> Archive Rachel Beatrice Nina Freydis	38	Basecloth Choices Qualities and properties
				40	Ordering How to place an order
				42	Get in Touch

Our print process

Since our inception in 1986, we've been leading the way in contract fabric supply in terms of design, product performance and service, so you can be confident you're in extremely safe hands. Boasting a wide range of facilities and options with woven as well as print fabric solutions, Panaz is the perfect choice for contract upholstery and drapery fabrics.

This brochure features a curated collection of our most popular printed designs and base cloth fabric options.

Eco-Friendly Digital Fabric Printing

As a company that has lived and breathed the fabrics industry for decades, we've developed cutting-edge facilities that guarantee the highest quality print every single time, without impacting on the environment. Every printed fabric in our factory is created using a sublimatic transfer process. This technique is completely waterless and contains absolutely no harmful chemicals.

Other printing processes may use water or harsh chemicals which are extremely bad for the environment. This is something we've never done. Our eco-friendly digital fabric printing process has always sought to be sustainable, and that will never change. Good for the planet and exceptional quality for you.

Extensive range of basecloths to choose from

From base cloth and wide width, to railroading and beyond, we have a wide range of digital fabric printing options for you to choose from. Our base cloths have been rigorously tested to the Martindale abrasion rub test processes, giving you reassurance that our printed fabrics will stand the test of time even in high traffic areas. Add to this our Flame Retardant credentials, with most of our fabrics inherently FR you can relax knowing that not only do we bring great design but we also bring great performance and safety too. Reassuringly Panaz.



Gardenia

Collection

Story One

“To plant a garden is to believe in tomorrow”

Audrey Hepburn

Inspired by the natural patterns of the outdoors, Gardenia is a collection of curated prints that embrace the uplifting influences of the botanical world, in a range of tranquil colour stories.

Featuring damask, floral and geometric designs, the Gardenia Collection is suitable for upholstery, curtains, cushions and accessories on any Panaz basecloth to suit healthcare, hospitality, workspace and cruise environments.

CO-ORDINATES WELL WITH:



Marna
835 Hessian



Luxe Velvet
408 Terracotta

Contact your Sales Representative for more information



Gardenia Collection

Elvina



Elvina
108 Delph



Elvina
203 Emerald



Elvina
215 Elm

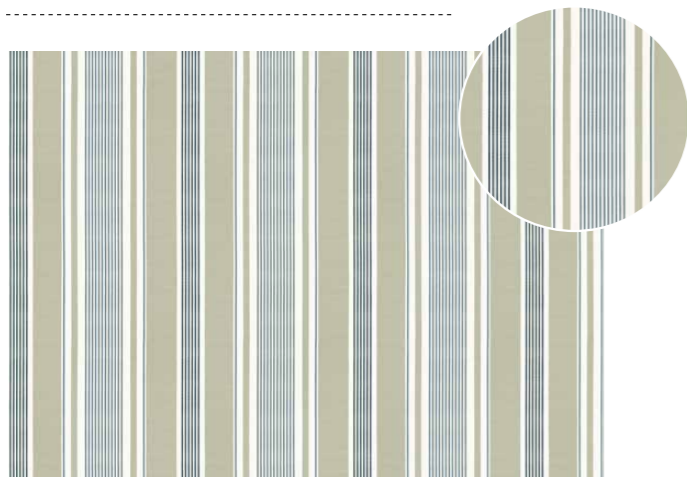


Elvina
426 Terracotta/Gold



Elvina
325 Lemon/Olive

Tiana



Tiana
835 Hessian



Tiana
215 Elm



Tiana
770 Nutmeg



Tiana
108 Delph



Tiana
325 Lemon/Olive

Elisa



Elisa
251 Eau De Nil



Elisa
105 Indigo



Elisa
467 Bordeaux



Elisa
408 Terracotta



Elisa
303 Lemon

Gardenia Collection

Sophia



Sophia
251 Eau De Nil



Sophia
215 Elm



Sophia
300 Gold

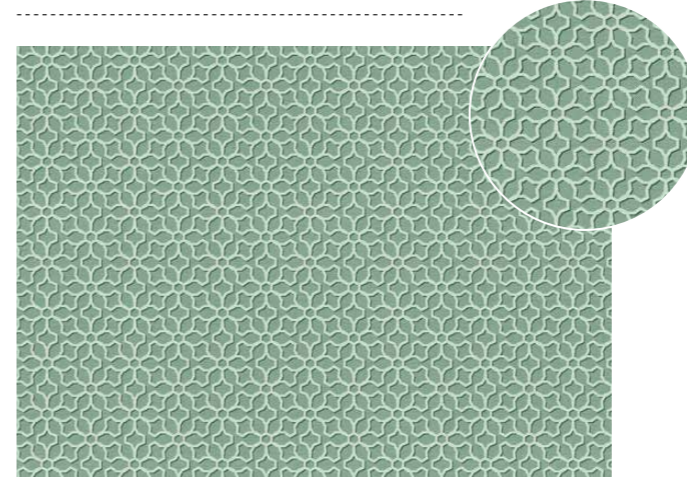


Sophia
401 Amber

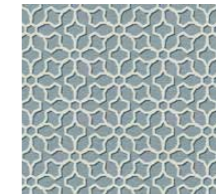


Sophia
392 Lemon/Beige

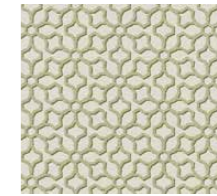
Dela



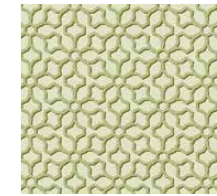
Dela
215 Elm



Dela
108 Delph



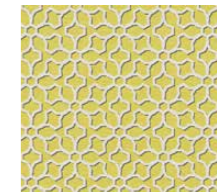
Dela
231 Olive



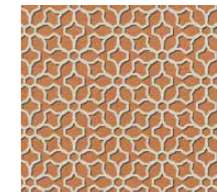
Dela
233 Pistachio



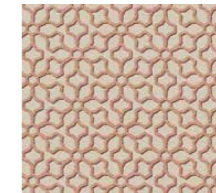
Dela
300 Gold



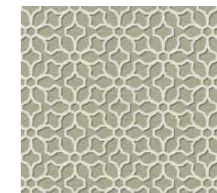
Dela
303 Lemon



Dela
401 Amber



Dela
770 Nutmeg



Dela
835 Hessian



Dela
872 Flax

Pattern Repeats

Dela	Elisa	Sophia	Elvina	Tiana
Fabric Width: *Approx. 138cms (54")	Fabric Width: *Approx. 138cms (54")	Fabric Width: *Approx. 138cms (54")	Fabric Width: *Approx. 138cms (54")	Fabric Width: *Approx. 138cms (54")
Height Repeat: Approx. 4.4cms (1.7")	Height Repeat: 45.6cms (18")	Height Repeat: Approx. 34.25cms (13.5")	Height Repeat: 68.5cms (27")	Height Repeat: Approx. Nil
Side Repeat: Approx. 7.6cms (3")	Side Repeat: 22.8cms (9")	Side Repeat: Approx. 34.25cms (13.5")	Side Repeat: 68.5cms (27")	Side Repeat: Approx. 22.8cms (9")

Fabric width is dependent on the basecloth chosen.



Folklore

Collection

Story Two

Folklore, a collection of timeless prints, reflective of the Arts and Crafts Movement, an era where design, quality and craft were paramount. With rich and diverse colour themes, these prints co-ordinate perfectly with our vast portfolio of upholsteries and plains. Use a mix of patterns for a contemporary look or muted plains for a classical look.

Available on a wide range of base cloths that are all full contract quality to UK and international standards. These high performance fabrics make them suitable for upholstery, drapery or accessories in a variety of contract environments.

CO-ORDINATES WELL WITH:

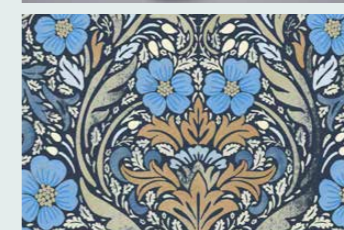


Alba
251 Eau de Nil



Luxe Velvet
447 Cinnamon

*Call 01282 696969
for more information*



Folklore Collection

Rubus



Rubus
192 Ink



Rubus
203 Emerald



Rubus
411 Spice



Rubus
626 Rose/Green

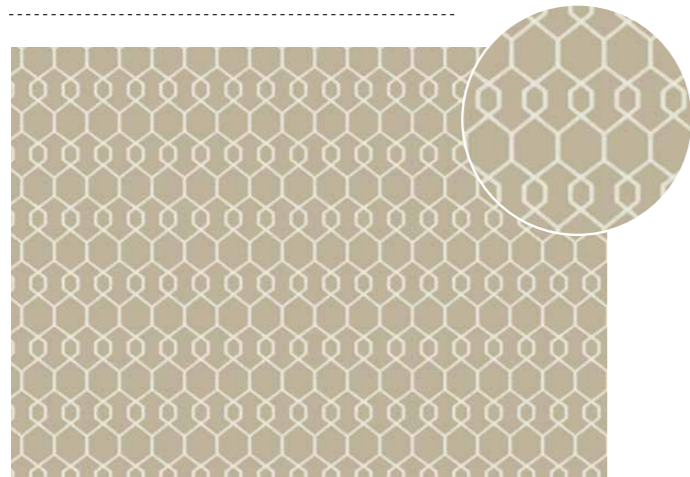


Rubus
325 Lemon/Olive

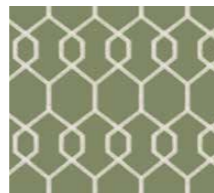


Rubus
998 Gunmetal /Dove

Filigree



Filigree
823 Chablis



Filigree
231 Olive



Filigree
447 Cinnamon



Filigree
506 Mist

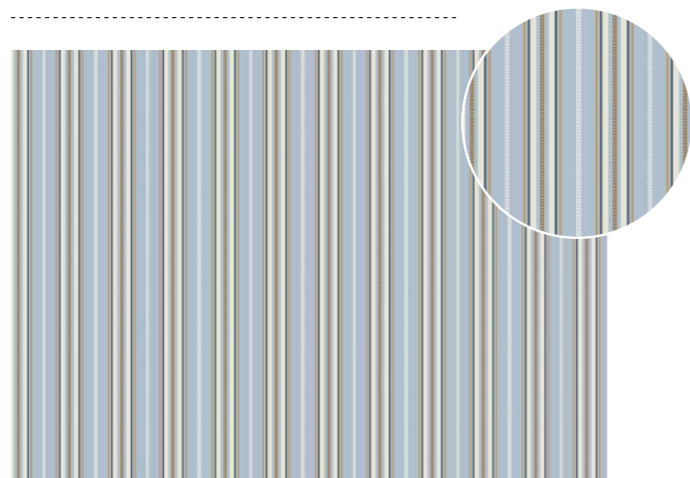


Filigree
204 Moss



Filigree
906 Ash

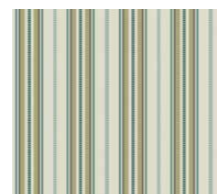
Fable



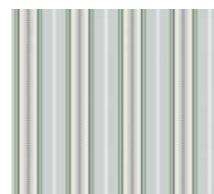
Fable
134 Sky



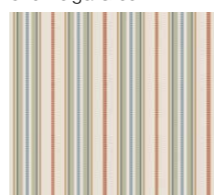
Fable
820 Beige/Green



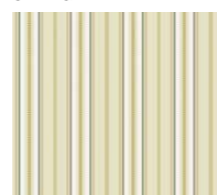
Fable
872 Flax



Fable
506 Mist



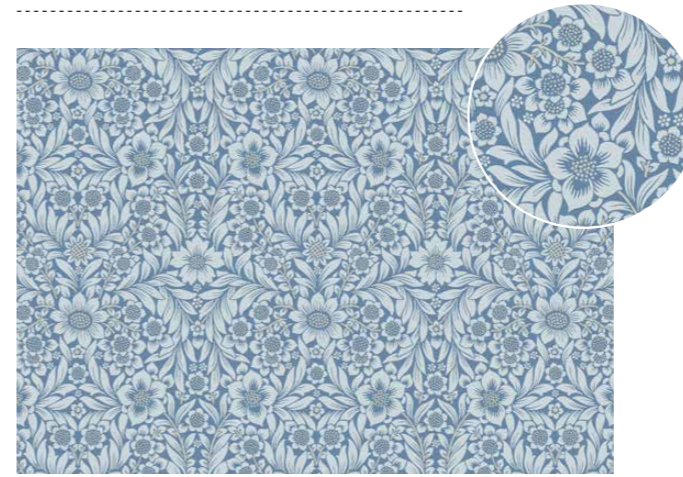
Fable
845 Stone/Paprika



Fable
326 Hay

Folklore Collection

Evelyn



Evelyn
134 Sky



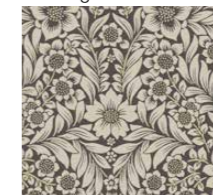
Evelyn
205 Sage Green



Evelyn
436 Paprika



Evelyn
618 Blush

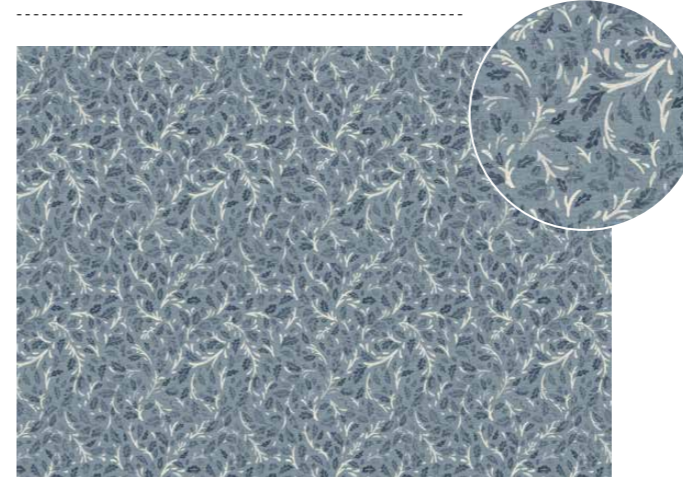


Evelyn
791 Mocha

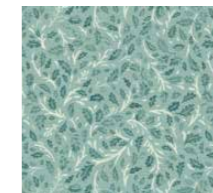


Evelyn
872 Flax

Arbor



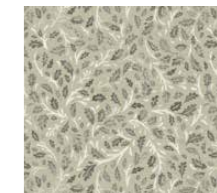
Arbor
108 Delph



Arbor
251 Eau De Nil



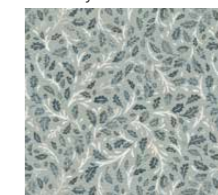
Arbor
326 Hay



Arbor
835 Hessian



Arbor
845 Stone/Paprika



Arbor
919 Zinc

Pattern Repeats

Rubus

Fabric Width:
Approx. 138cms (54")

Height Repeat:
Approx. 68.5cms (27")

Side Repeat:
Approx. 68.5cms (27")

Filigree

Fabric Width:
Approx. 138cms (54")

Height Repeat:
Approx. 12cms (4.7")

Side Repeat:
Approx. 6cms (2.3")

Fable

Fabric Width:
Approx. 138cms (54")

Height Repeat:
Approx. 10cms (3.9")

Side Repeat:
Approx. 11.40cms (4.4")

Evelyn

Fabric Width:
Approx. 138cm (54")

Height Repeat:
Approx. 34.25cms (13.48)

Side Repeat:
Approx. 34.25cms (13.48)

Arbor

Fabric Width:
Approx. 138cm (54")

Height Repeat:
21.49cms (8.4")

Side Repeat:
22.30cms (8.77")

Fabric width is dependent on the basecloth chosen.

Hoxton Collection *Story Three*

Hoxton is a stylish print collection of four designs, each cleverly displaying sophisticated textures to emulate the fine yarns of tailored fabrics. Ranging from muted soft greys and pinks, through to bolder jewel tones and with plenty of contrast, there are colour options perfect for any scheme. Perfect for a timeless and classical look in hospitality or retired living.

Available on a wide range of basecloths that are all full contract quality to UK and international standards. These high performance fabrics make them suitable for upholstery, drapery or accessories in a variety of contract environments.

CO-ORDINATES WELL WITH:



Allure Velvet
952 Platinum



Kilda
131 Azure

*Visit Panaz.com
for more information*



Hoxton Collection

Finsbury



Finsbury
110 Pacific



Finsbury
692 Heather



Finsbury
491 Terracotta/Steel



Finsbury
320 Gold/Green



Finsbury
166 Aqua/Lime

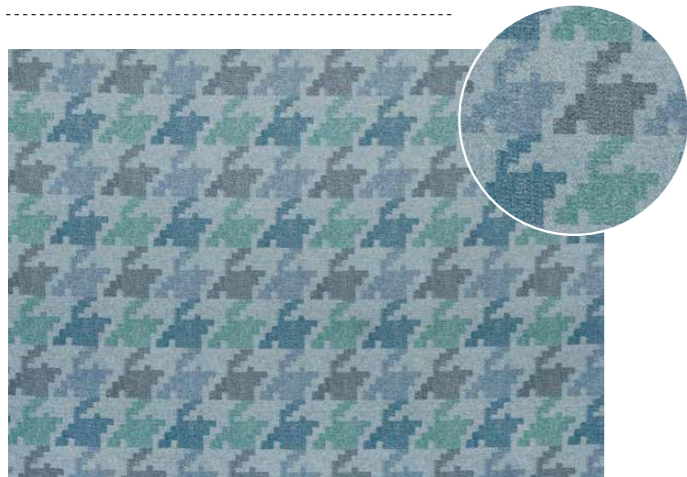


Finsbury
674 Blush/Mink



Finsbury
467 Bordeaux

Pimlico



Pimlico
131 Azure



Pimlico
692 Heather



Pimlico
491 Terracotta/Steel



Pimlico
215 Elm



Pimlico
166 Aqua/Lime

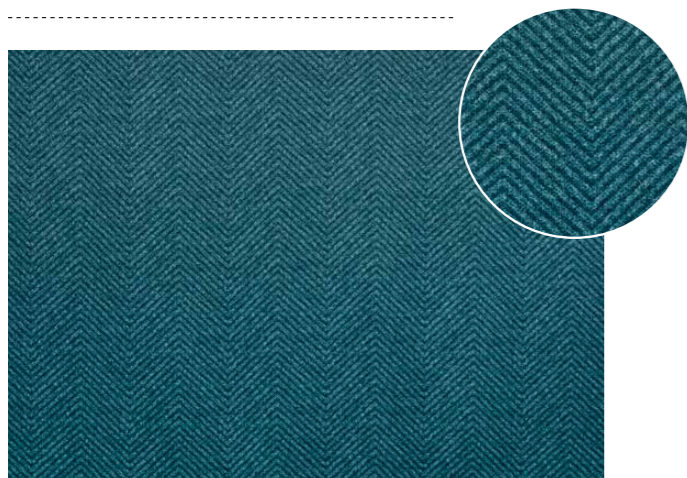


Pimlico
674 Blush/Mink



Pimlico
467 Bordeaux

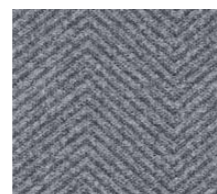
Camden



Camden
131 Azure



Camden
692 Heather



Camden
911 Steel



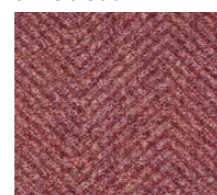
Camden
312 Old Gold



Camden
251 Eau De Nil



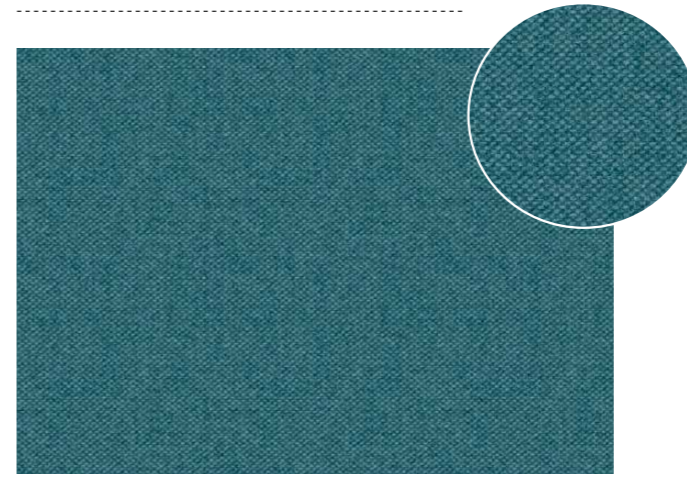
Camden
703 Mink



Camden
467 Bordeaux

Hoxton Collection

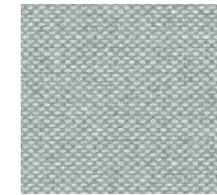
Balham



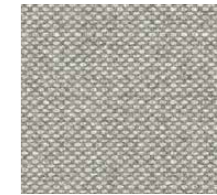
Balham
131 Azure



Balham
215 Elm



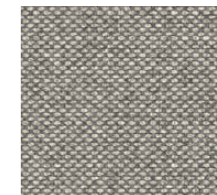
Balham
251 Eau De Nil



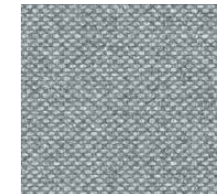
Balham
905 Dove



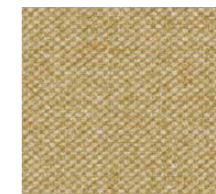
Balham
226 Lime



Balham
791 Mocha



Balham
919 Zinc



Balham
312 Old Gold



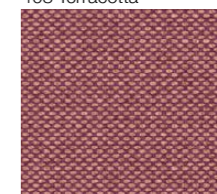
Balham
408 Terracotta



Balham
877 Oyster



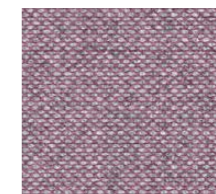
Balham
660 Powder Pink



Balham
467 Bordeaux



Balham
609 Rose



Balham
692 Heather

For more colourways of Balham, see page 35

Pattern Repeats

Finsbury	Pimlico	Camden	Balham
Fabric Width: Approx. 138cms (54")	Fabric Width: Approx. 138cms (54")	Fabric Width: Approx. 138cm (54")	Fabric Width: Approx. 138cm (54")
Height Repeat: Approx. 34.3cms (13.5")	Height Repeat: Approx. 9.7cms	Height Repeat: Approx. 5.5cms (2.2")	Height Repeat: Nil
Side Repeat: Approx. 34.3cms (13.5")	Side Repeat: Approx. 9.8cms (3.9")	Side Repeat: Approx. 7.6cms (3")	Side Repeat: Nil

Fabric width is dependent on the basecloth chosen.



Delamere

Collection

Story Four

Inspired by nature and influenced by art, Delamere is a refined collection of fabric designs for use as upholstery, drapery and accessories.

An ideal collection to create a relaxed and calm natural environment.

Available on a wide range of base cloths that are all full contract quality to UK and international standards. These high performance fabrics make them suitable for upholstery, drapery or accessories in a variety of contract environments.

CO-ORDINATES WELL WITH:

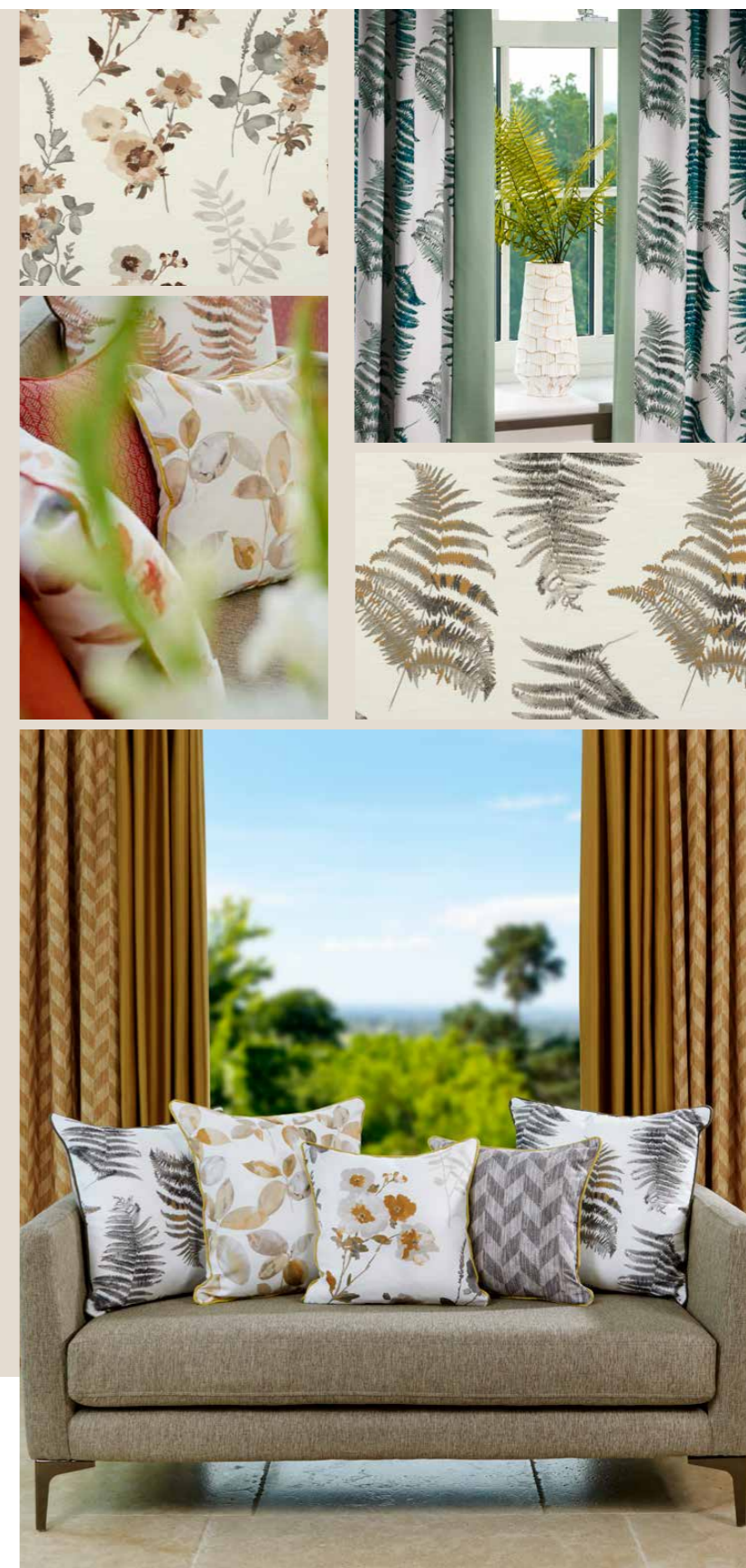


Marna
835 Hessian



Lusso
703 Mink

*Call 01282 696969
for more information*



Delamere Collection

Felsham



Felsham
215 Elm



Felsham
401 Amber



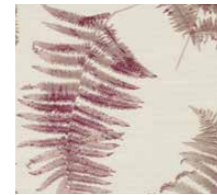
Felsham
889 Coffee/Slate



Felsham
911 Steel



Felsham
201 Jade

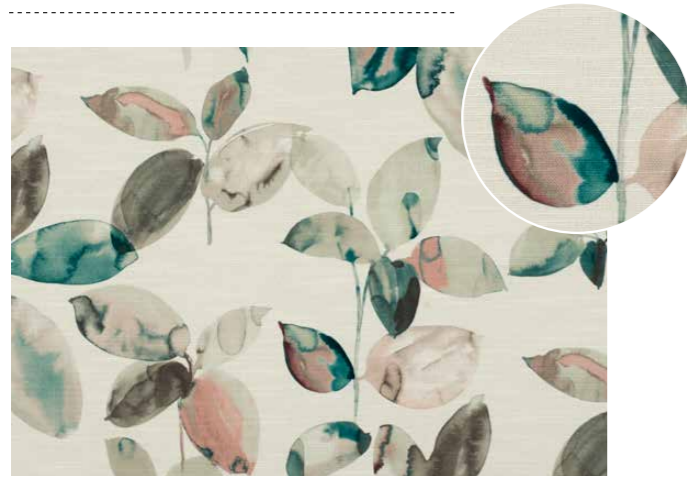


Felsham
673 Mulberry/Mink



Felsham
904 Pewter

Langley



Langley
266 Emerald/Blush



Langley
401 Amber



Langley
889 Coffee/Slate



Langley
195 Ink/Steel



Langley
201 Jade



Langley
673 Mulberry/Mink



Langley
380 Gold/Beige

Trentham



Trentham
266 Emerald/Blush



Trentham
401 Amber



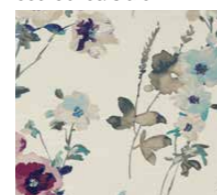
Trentham
889 Coffee/Slate



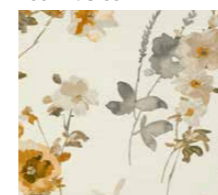
Trentham
195 Ink/Steel



Trentham
297 Citrus/Coffee



Trentham
616 Mulberry/Ocean



Trentham
380 Gold/Beige

Delamere Collection

Odell



Odell
203 Emerald



Odell
238 Citrus



Odell
408 Terracotta



Odell
888 Coffee



Odell
129 Ocean

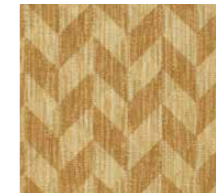


Odell
192 Ink

Arley



Arley
215 Elm



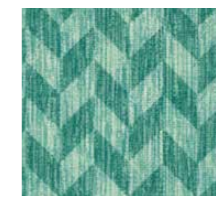
Arley
300 Gold



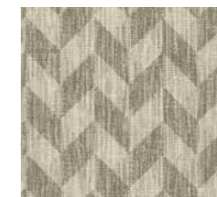
Arley
904 Pewter



Arley
108 Delph



Arley
201 Jade



Arley
905 Dove

Pattern Repeats

Felsham

Fabric Width:
Approx. 138cms (54")

Height Repeat:
Approx. 34.3cms (13.5")

Side Repeat:
Approx. 34.3cms (13.5")

Langley

Fabric Width:
Approx. 138cms (54")

Height Repeat:
Approx. 41.4cms (16.3")

Side Repeat:
Approx. 34.2cms (13.5")

Trentham

Fabric Width:
Approx. 138cms (54")

Height Repeat:
Approx. 64cms (25.2")

Side Repeat:
Approx. 68.5cms (27")

Odell

Fabric Width:
Approx. 138cm (54")

Height Repeat:
Approx. 3.72cms (1.4")

Side Repeat:
Approx. 2.74cms (1")

Arley

Fabric Width:
Approx. 138cm (54")

Height Repeat:
8.6cms (3.4")

Side Repeat:
8.6cms (3.4")

Fabric width is
dependent on the
basecloth chosen.

Aviemore & Provence

Collections

Story Five

An exquisite print collection of traditional designs with a contemporary twist, in soft restful colour stories.

Perfect for bedrooms or public areas designed to be welcoming and relaxing.

Available on a wide range of base cloths that are all full contract quality to UK and international standards. These high performance fabrics make them suitable for upholstery, drapery or accessories in a variety of contract environments.

CO-ORDINATES WELL WITH:

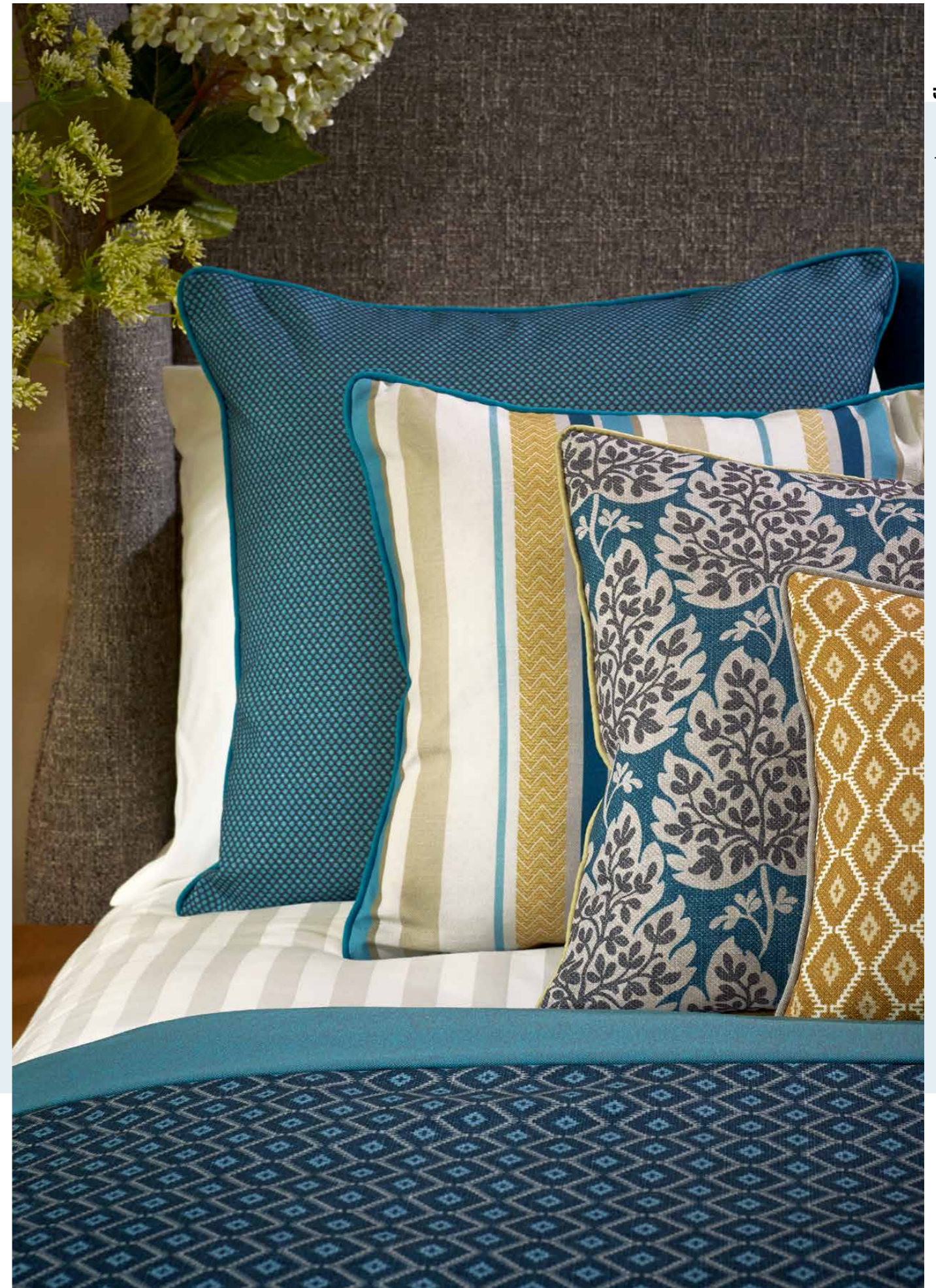


Marna
238 Citrus



Allure Velvet
905 Dove

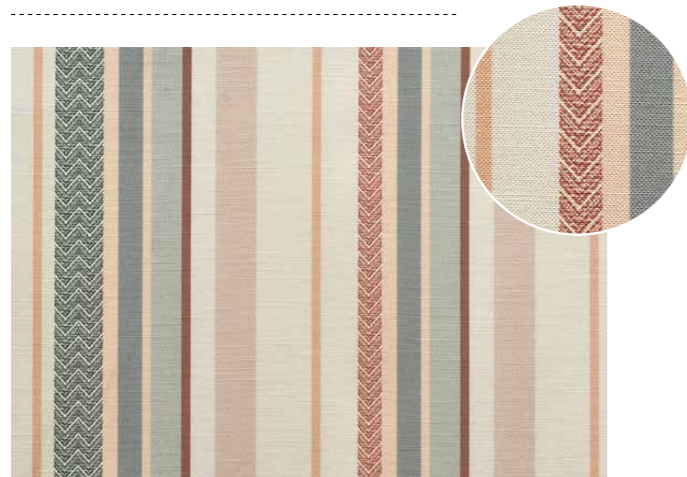
Contact your Sales Representative for more information



Aviemore & Provence

Collections

Alder Stripe



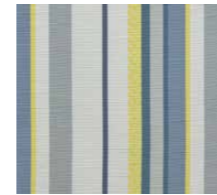
Alder Stripe
848 Cream/Terracotta



Alder Stripe
294 Pistachio/Steel



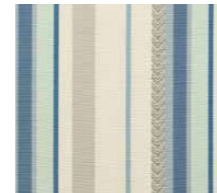
Alder Stripe
176 Teal/Gold



Alder Stripe
186 Indigo/Citrus



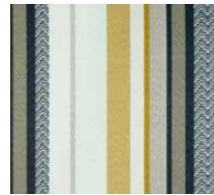
Alder Stripe
395 Gold/Dove



Alder Stripe
107 Cornflower



Alder Stripe - Provence
222 Apple



Alder Stripe - Provence
313 Yellow



Alder Stripe - Provence
165 Pacific/Navy



Alder Stripe - Provence
179 Blue/Cream

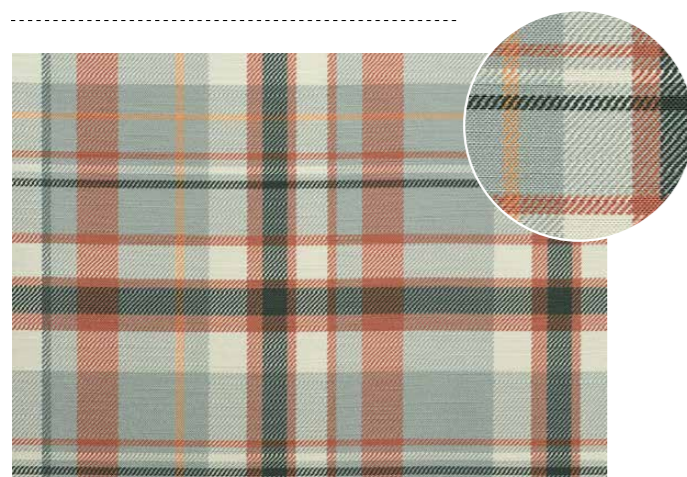


Alder Stripe - Provence
450 Red/Gray



Alder Stripe - Provence
485 Orange/Chablis

Lomond



Lomond
492 Terracotta/Steel



Lomond
294 Pistachio/Steel



Lomond
276 Teal/Gold



Lomond
105 Indigo



Lomond
395 Dove/Gold

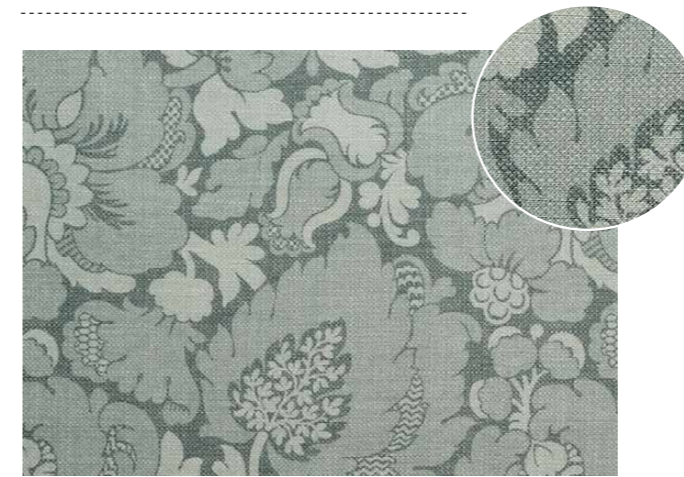


Lomond
107 Cornflower

Aviemore & Provence

Collections

Balintore



Balintore
911 Steel



Balintore
905 Dove

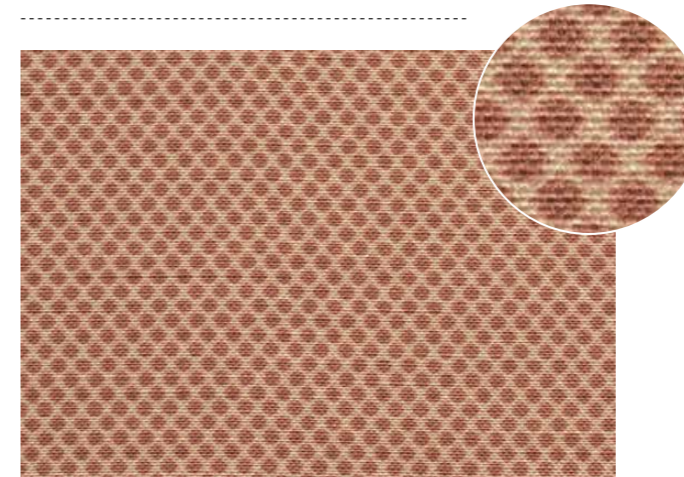


Balintore
300 Gold



Balintore
105 Indigo

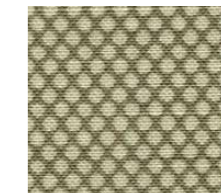
Fraser



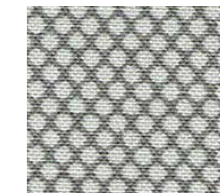
Fraser
408 Terracotta



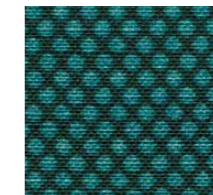
Fraser
233 Pistachio



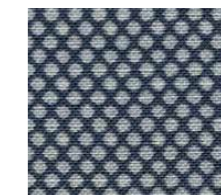
Fraser
905 Dove



Fraser
919 Zinc



Fraser
151 Teal



Fraser
105 Indigo



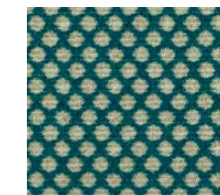
Fraser - Provence
222 Apple



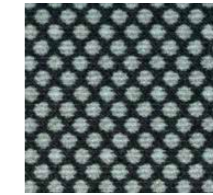
Fraser - Provence
402 Orange



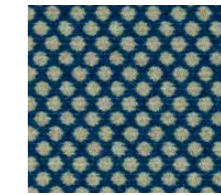
Fraser - Provence
500 Grey



Fraser - Provence
110 Pacific



Fraser - Provence
949 Noir



Fraser - Provence
179 Blue/Cream

Aviemore & Provence

Collections

Cassley



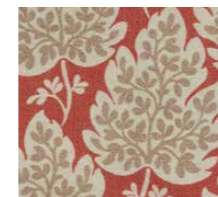
Cassley
408 Terracotta



Cassley
155 Duck Egg Blue



Cassley - Provence
314 Mustard



Cassley - Provence
400 Red



Cassley
151 Teal



Cassley - Provence
179 Blue/Cream



Cassley - Provence
402 Orange



Cassley - Provence
110 Pacific

Kinloch



Kinloch
911 Steel



Kinloch
231 Olive



Kinloch
151 Teal



Kinloch
105 Indigo



Kinloch
300 Gold



Kinloch
155 Duck Egg Blue



Kinloch - Provence
485 Orange/Chablis



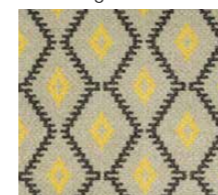
Kinloch - Provence
500 Grey



Kinloch - Provence
222 Apple



Kinloch - Provence
110 Pacific



Kinloch - Provence
873 Hessian/Yellow

Aviemore & Provence

Collections

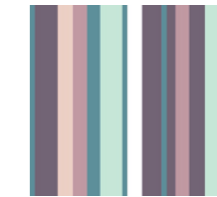
Metro - Provence



Metro - Provence
402 Orange



Metro - Provence
179 Blue/Cream



Metro - Provence
155 Duck Egg Blue



Metro - Provence
222 Apple



Metro - Provence
313 Yellow



Metro - Provence
165 Pacific/Navy



Metro - Provence
901 Silver



Metro - Provence
450 Red/Grey

Pattern Repeats

Pattern	Fabric Width	Height Repeat	Side Repeat
Lomond	Approx. 138cms (54")	Approx. 34.2cms (13.5")	Approx. 34.2cms (13.5")
Alder Stripe	Approx. 138cms (54")	Approx. 4cms (1.6")	Approx. 34.3cms (13.5")
Balintore	Approx. 138cm (54")	Approx. 73.8cms (13.5")	Approx. 34.2cms (29")
Fraser	Approx. 138cm (54")	0.7cms (0.3")	0.6cms (0.2")
Cassley	Approx. 138cms (54")	Approx. 17.1cms (6.7")	Approx. 17.1cms (6.7")
Kinloch	Approx. 138cms (54")	Approx. 4.2cms (1.7")	Approx. 4.2cms (1.7")
Metro	Approx. 138cm (54")	Nil	13.7cms (5.4")

Fabric width is dependent on the basecloth chosen.

Archive Collection

from
GAWTHORPE HALL
LANCASHIRE, ENGLAND

Story Six

A sophisticated range of five exquisite print designs direct from the historic archives of the Gawthorpe Hall Textile Collection.

Available on a wide range of base cloths that are full contract quality to UK and international standards with technical properties, making them suitable for upholstery, drapery or accessories in a variety of contract environments.



CO-ORDINATES WELL WITH:



Allure Velvet
192 Ink



Harvard
229 Forest

*Visit Panaz.com
for more information*



Archive Collection

Rachel



Rachel
108 Delph



Rachel
953 Gunmetal

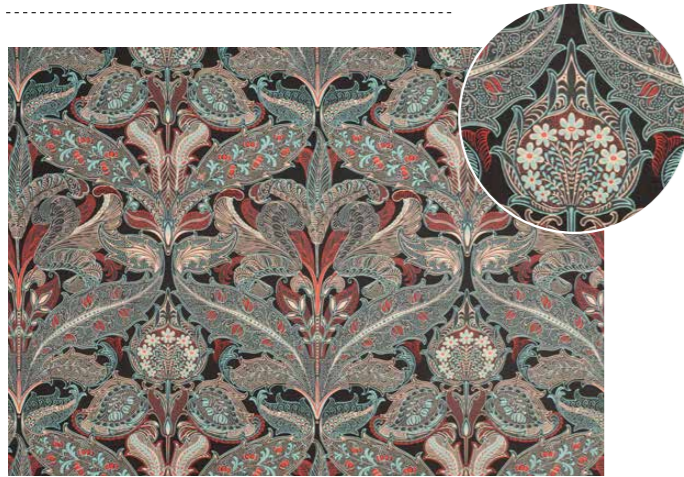


Rachel
252 Willow



Rachel
925 Putty

Beatrice



Beatrice
108 Delph



Beatrice
105 Indigo



Beatrice
447 Cinnamon



Beatrice
481 Damson

* Ellen Tex



*Ellen Tex
131 Azure



*Ellen Tex
105 Indigo



*Ellen Tex
834 Honey



*Ellen Tex
481 Damson

Archive Collection

* Nina Tex



*Nina Tex
131 Azure



*Nina Tex
834 Honey

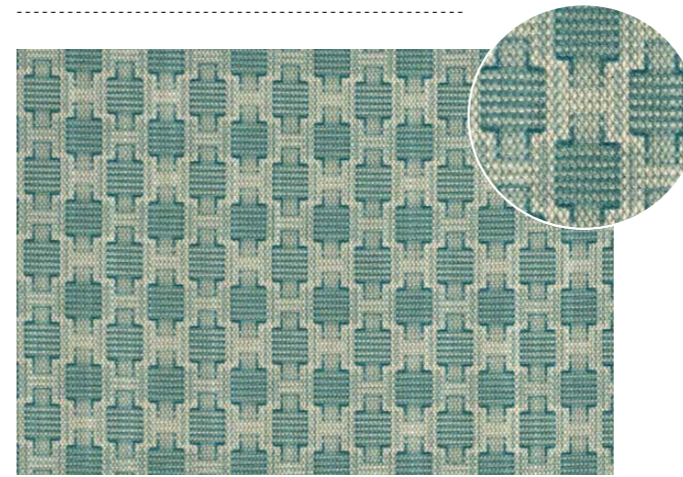


*Nina Tex
481 Damson



*Nina Tex
105 Indigo

* Freydis Tex



*Freydis Tex
131 Azure



*Freydis Tex
105 Indigo



*Freydis Tex
905 Dove



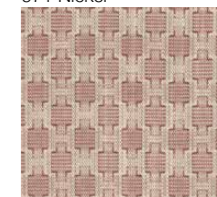
*Freydis Tex
971 Nickel



*Freydis Tex
229 Forest



*Freydis Tex
834 Honey



*Freydis Tex
618 Blush



*Freydis Tex
602 Peach

* These designs are not available printed onto Suri basecloth.

Pattern Repeats

Freydis Tex

Fabric Width:
Approx. 138cms (54")

Height Repeat:
Approx. 3cms (1.2")

Side Repeat:
Approx. 3cms (1.2")

Nina Tex

Fabric Width:
Approx. 138cms (54")

Height Repeat:
Approx. 34cms (13.4")

Side Repeat:
Approx. 68cms (26.7")

EllenTex

Fabric Width:
Approx. 138cms (54")

Height Repeat:
Approx. Nil

Side Repeat:
Approx. 17cms (7")

Beatrice

Fabric Width:
Approx. 140cm (55")

Height Repeat:
Approx. 36cms (14.2")

Side Repeat:
Approx. 34.3cms (13.5")

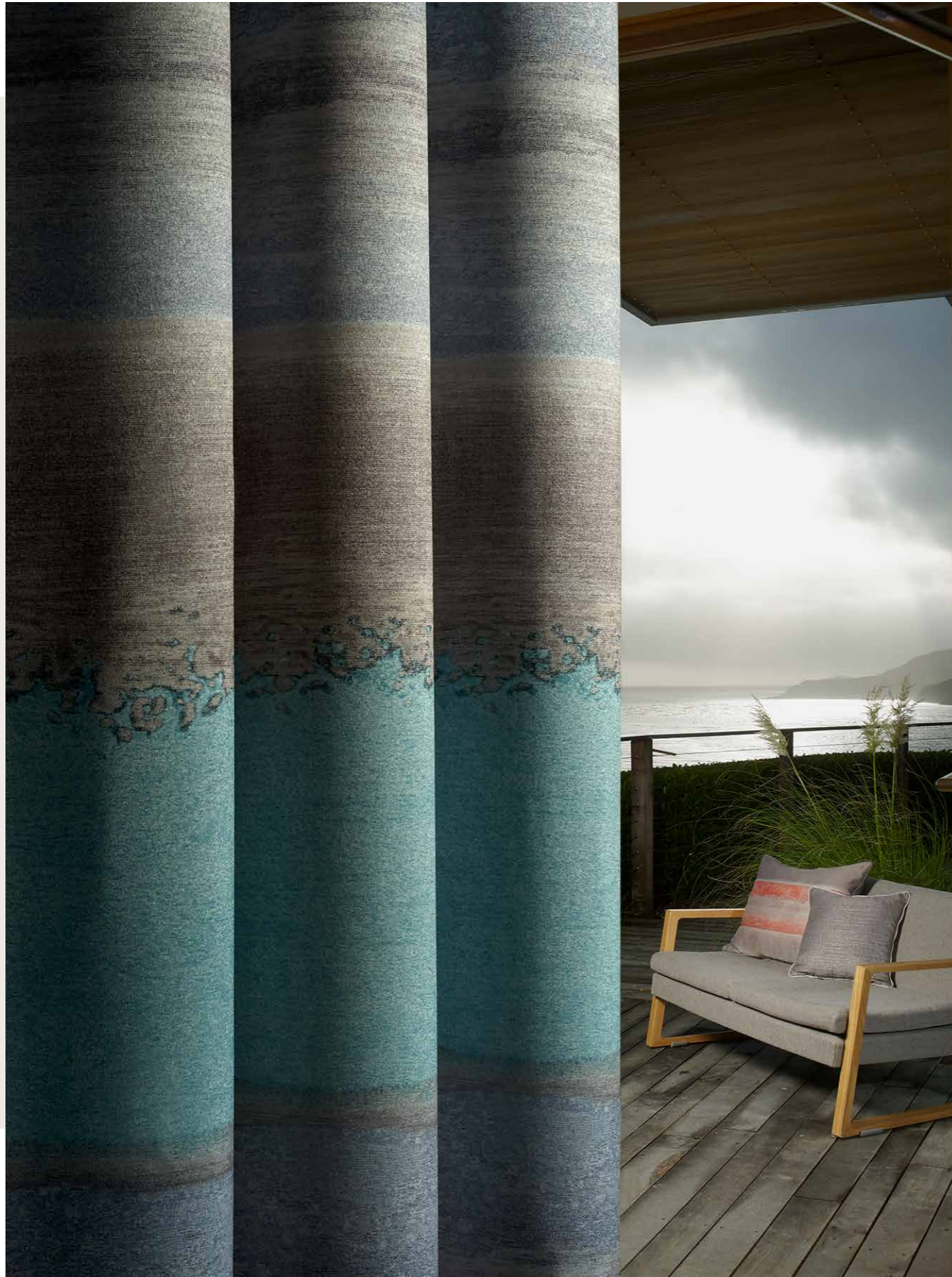
Rachel

Fabric Width:
Approx. 140cms (55")

Height Repeat:
104.6cms (41.2")

Side Repeat:
137cms (54")

Fabric width is dependent on the basecloth chosen.



Seascape

Collection

Story Seven

Inspired by nature and with a design nod to our oceans and landscape, Seascape brings a touch of seaside to your project whether coastal or inland. The wide range of colours make it easy to complement any colour scheme.

Available on a wide range of base cloths that are all full contract quality to UK and International Standards making them suitable for upholstery, drapery or accessories in a variety of contract environments.

CO-ORDINATES WELL WITH:



Vintage
815 Buff

Harvard
905 Dove

*Call 01282 696969
for more information*



Seascape
155 Duck Egg Blue



Seascape
201 Jade



Seascape
103 Denim



Seascape
858 Cobble



Seascape
229 Forest



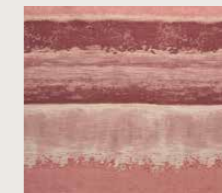
Seascape
138 Citrus



Seascape
300 Gold



Seascape
408 Terracotta



Seascape
439 Raspberry



Seascape
213 Aubergine

Pattern Repeats

Seascape

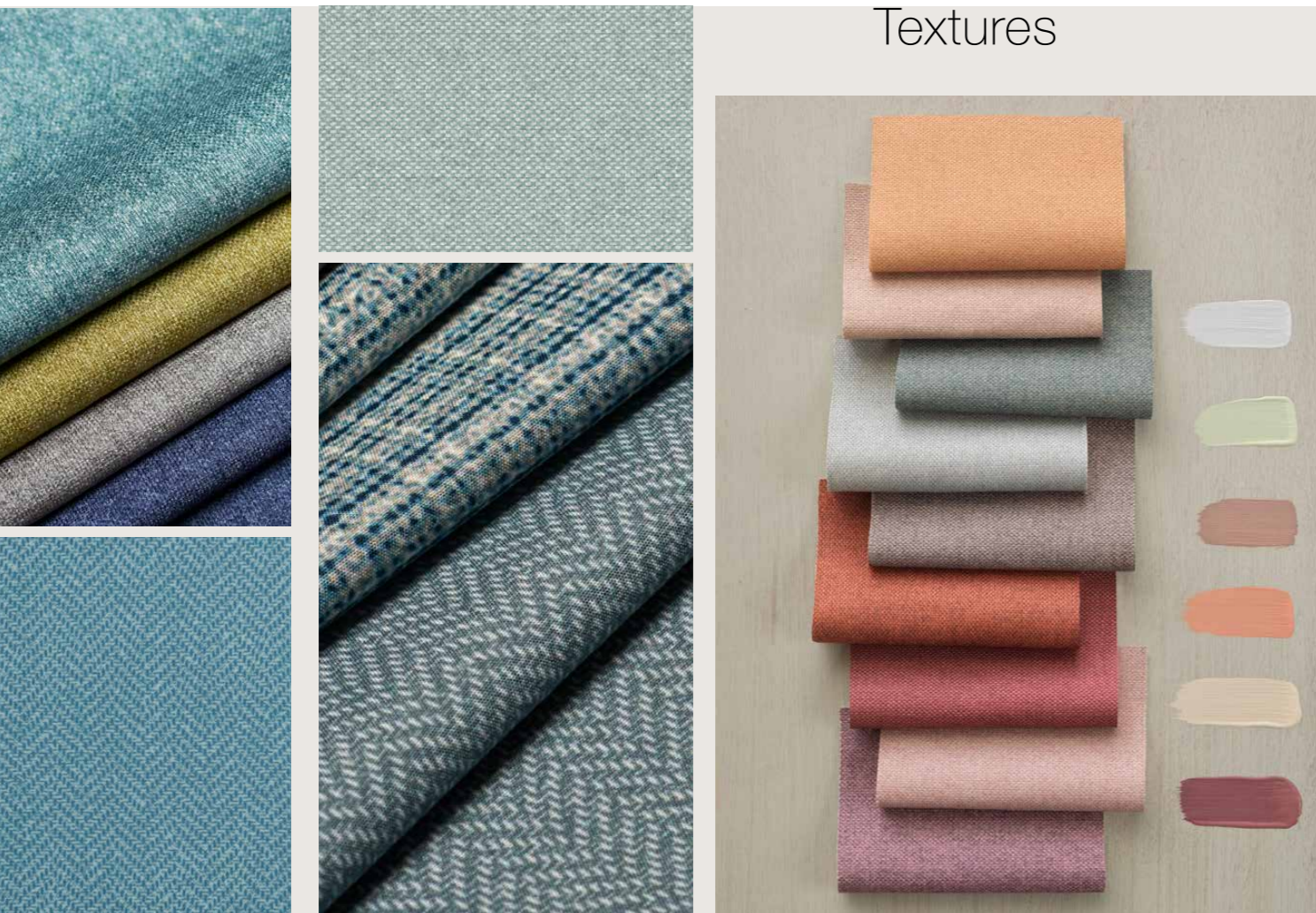
Fabric Width:
Approx. 138cms (54") or wide width 280cms (110")

Height Repeat:
Approx. 52cms (20.5")

Side Repeat:
Approx. 34.3cms (13.5")

*Fabric width is dependent on the basecloth chosen.

Printed Textures



With a wide selection of co-ordinating printed plains, we make it easier to find the perfect match to enhance your interior design scheme.

Soften your style with muted neutrals or add a flash of bold colour to stand out. Using Panaz plain colour options curated to complement our design collections.

Featuring over 70 subtly textured options to select from across tonal Balham, wool-effect Karl and herringbone Newell.

Balham



Fabric width is dependent on the basecloth chosen.

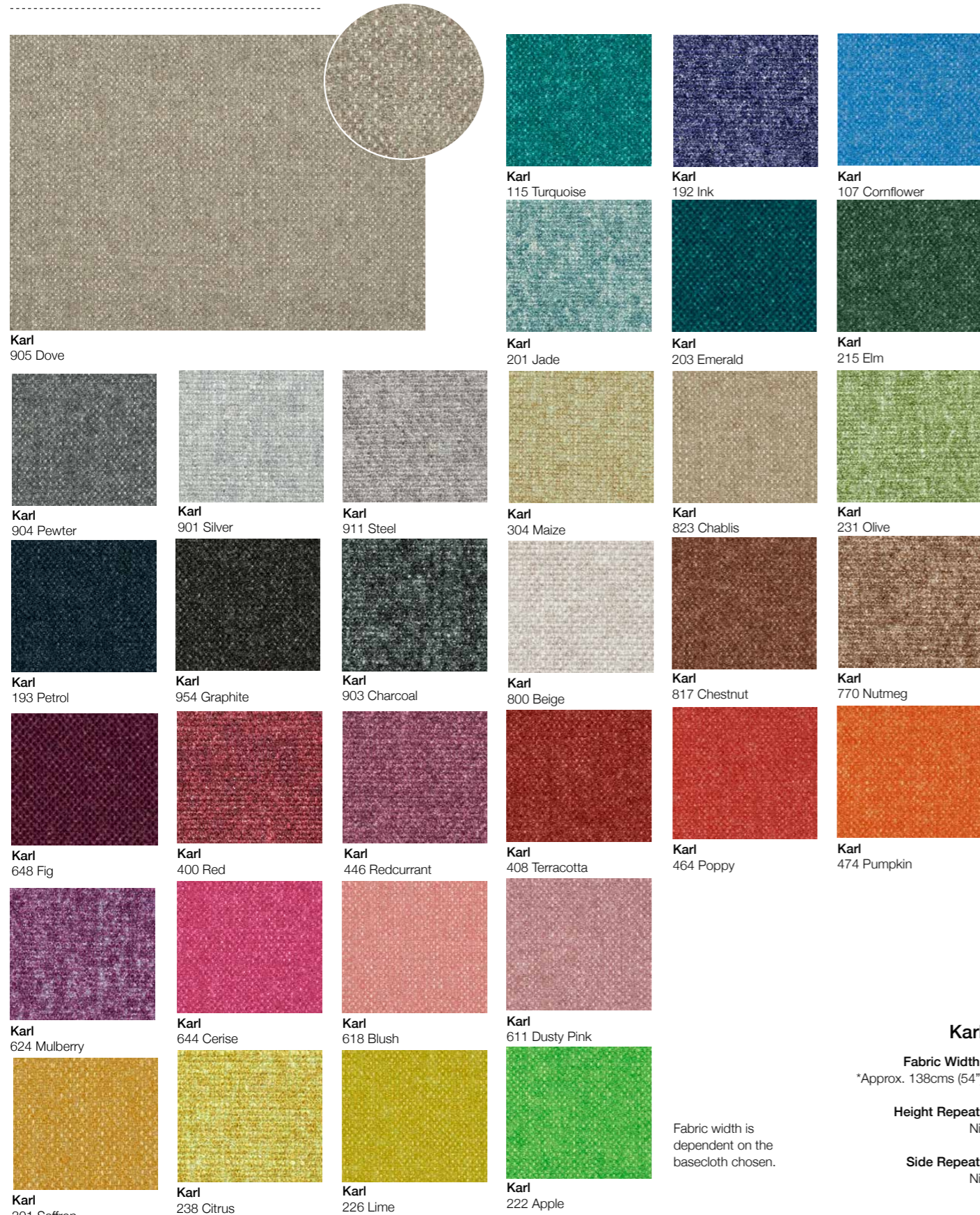
Balham
Fabric Width:
*Approx. 138cms (54") or wide width 280cms (110")

Height Repeat:
Nil

Side Repeat:
Nil

Printed Textures

Karl



Karl

Fabric Width:
*Approx. 138cms (54")

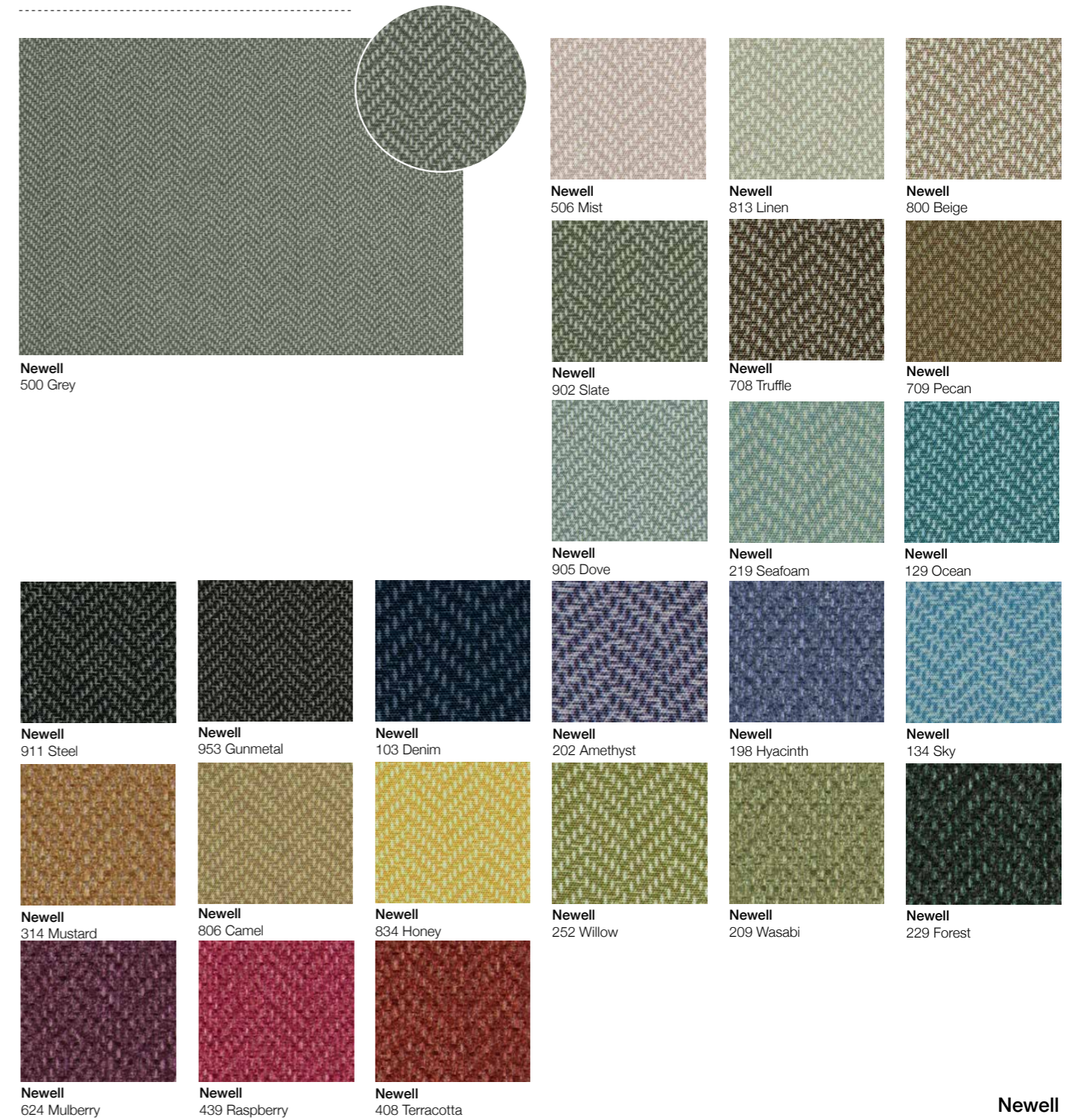
Height Repeat:
Nil

Side Repeat:
Nil

Fabric width is
dependent on the
basecloth chosen.

Printed Textures

Newell



Newell

Fabric Width:
*Approx. 138cms (54")

Height Repeat:
Nil

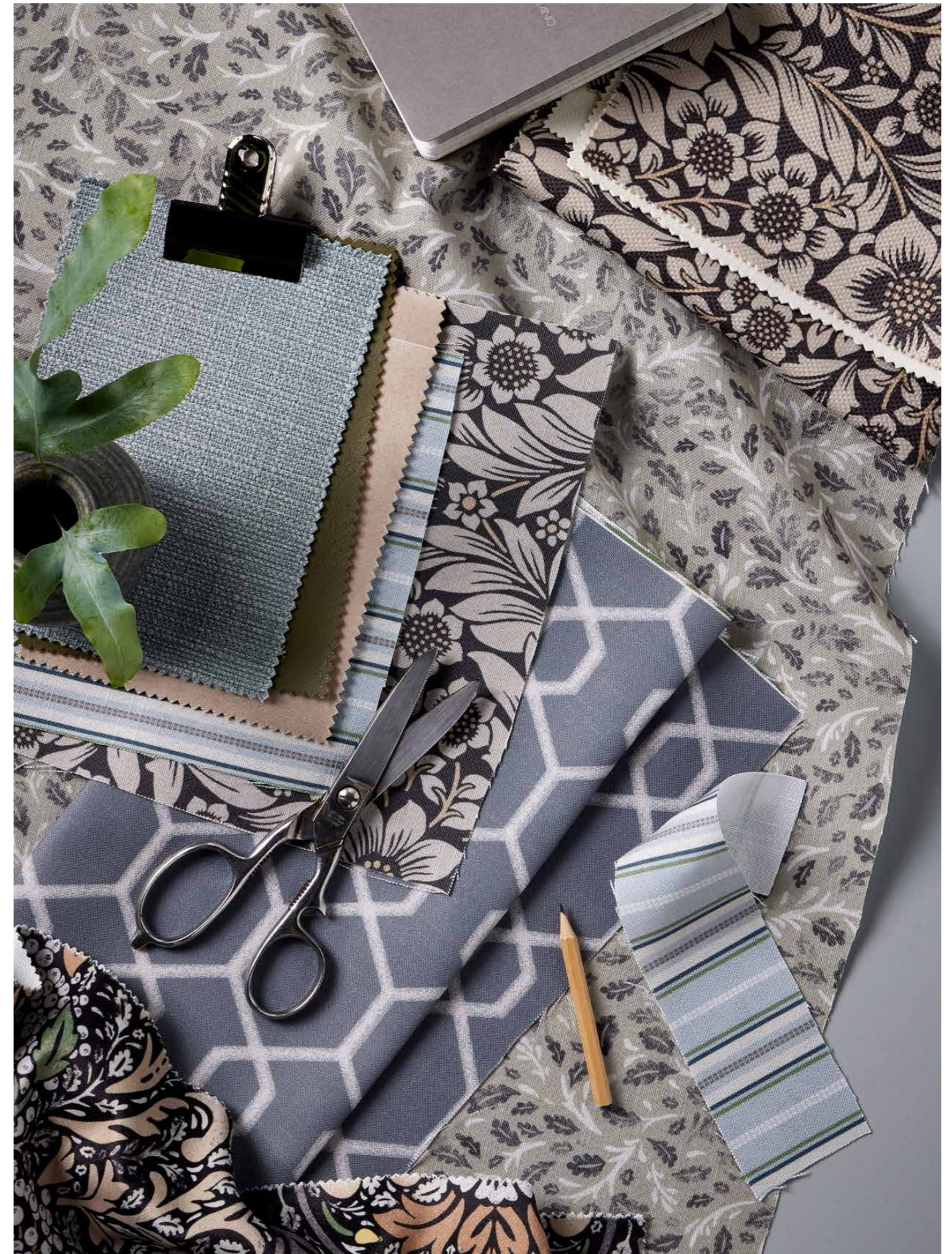
Side Repeat:
Nil

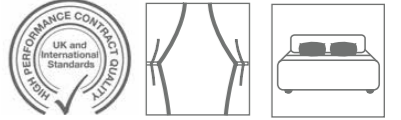
Fabric width is
dependent on the
basecloth chosen.

How to place your order

- Step 1** Browse the printed stories in this brochure or visit our website www.panaz.com for more options.
- Step 2** Select your chosen design.
- Step 3** Select your chosen colourway eg. 203 Emerald.
- Step 4** Select a basecloth option from our upholstery or curtain basecloth guide on page 40-41, suitable for your project needs. eg. 459 Diamond Weave.
- Step 5** **Minimum order quantity 4m**
Place your order via sales@panaz.co.uk or speak directly to Panaz on 01282 696969.

It is recommended that you order a sample first before ordering a large quantity. e-mail: samples@panaz.co.uk or contact your Panaz sales representative.





Basecloth choices

Learn about our printed options and how to select the right basecloth to suit your design and performance requirements.

With an extensive range of basecloth options, you can select any of our print designs in any colourway to suit any end use. Both the technical properties and price of the fabric are determined by the basecloth on which the design is printed, so picking the right basecloth to fulfil your requirements is a key consideration. We offer basecloths suitable for blackout, dimout and sheer curtains (in both standard and wide width) as well as bedspreads, soft furnishing accessories and upholstery, with a range of technical advantages such as antimicrobial, stain-resistance and waterproof protection.



By using Panaz fabrics treated with Shieldplus, environments can be made safer and with the largest collection of fabrics treated with Shieldplus in Europe, design, flame retardancy and comfort need not be compromised.

Shieldplus, is a nano-technology, a non-migrating (non-leaching) antimicrobial protection that acts on the physical structure of the cell by piercing the cell wall. This non-migrating technology is based upon the application of a permanent coating on the textile. This coating destroys bacteria on contact. It is permanently attached to the textile: it attracts, pierces, deactivates and electrocutes the biochemicals within each microbe or virus.

To see the **basecloth options**, please see our base cloth qualities chart below.



PRINTED FABRICS FOR UPHOLSTERY

All printed designs featured in the Print Stories Brochure, may be printed on any of the basecloths listed below. Samples of any design printed on the basecloth of your choice are available on request.

Quality	Fabric ref.	Width Approx. cm	Weight g/m ² +/- 5%	Martindale abrasion resistance	Wyzenbeek DR abrasion resistance	Application		Technology					Flammability Ratings															
						Upholstery: 10000 covers	Upholstery	Anti-Microbial	Breathable	Stain Resistant	Waterproof	BS5852 2005 Ignition Source 5	EN 1021-1/2	BS7176 Medium Hazard	M1 France	B1 Germany	NFPA 260 USA	Cal 117	Marine Standard Part 8									
Highland Print Textured Upholstery	shieldplus	010	136	340	40,000+	70,000+	•	•	•	•	•	•	•	•	•	•	•	•	•	•	•	•	•	•	•	•	•	
Luxe™ PFP	shieldplus	340	138	432	45,000	50,000	•	•	•	•	•	•	•	•	•	•	•	•	•	•	•	•	•	•	•	•	•	•
Woolton PFP		285	138	450	50,000+		•	•	•	•	•	•	•	•	•	•	•	•	•	•	•	•	•	•	•	•	•	•
Woolton Plus PFP	shieldplus	295	138	460	50,000+		•	•	•	•	•	•	•	•	•	•	•	•	•	•	•	•	•	•	•	•	•	•
panvellestretch™	shieldplus	007	138	400	60,000+	50,000	•	•	•	•	•	•	•	•	•	•	•	•	•	•	•	•	•	•	•	•	•	•
Allure Matt Velvet		190	138	375	40,000	70,000	•	•	•	•	•	•	•	•	•	•	•	•	•	•	•	•	•	•	•	•	•	•
ECO TWILL™ RECYCLED FABRIC	shieldplus	458	138	375	100,000+	50,000	•	•	•	•	•	•	•	•	•	•	•	•	•	•	•	•	•	•	•	•	•	•
ECO TWIST™ RECYCLED FABRIC		505	138	295	90,000		•	•	•	•	•	•	•	•	•	•	•	•	•	•	•	•	•	•	•	•	•	•

* PFP is Prepared For Print

PRINTED FABRICS FOR CURTAINS, BEDDING AND ACCESSORIES

All printed designs from the Print Stories Brochure may be printed on any of the basecloths listed below. (unless otherwise stated) Samples of any design printed on the base cloth of your choice are available on request.

Quality	Fabric ref.	Width Approx. cm	Weight g/m ² +/- 5%	Application							Technology	Flammability Ratings																	
				Window Curtains	Cubicle Curtains	Dimout Curtains	Blackout curtains	Sheer Curtains	Bedding: Duvet Covers, Sheets and Pillow Cases	Bedspreads		Accessories: Cushions	Anti-Microbial	Stain Resistant	BS5857 Part 2 Type C	BS5857 Part 2 Type B	BS7175 Ignition Source 7	EN13773	M1 France	M2 France	B1 Germany	NFPA 701 USA	Marine Standard Part 7	Marine Standard IMO 9					
Satin Filament* (available in wide width)	009	138	230	•	•					•	•	•	•	•	•	•	•	•	•	•	•	•	•	•	•	•	•	•	•
Diamond Weave	459	138	230	•	•																								•
Plainweave Light	222	138	145	•						•	•	•	•	•	•	•	•	•	•	•	•	•	•	•	•	•	•	•	•
shieldplus Super Soft Shield Plus Anti-Microbial Dimout*	076	138	280	•	•	•																							
shieldplus Satin Filament Shield Plus Anti-Microbial Fabric*	093	138	230	•	•																								•
Matt Slub Effect	094	138	240	•	•																								•
Textured Blackout (available in wide width)	187	138	390	•																									•
Super Soft Dimout*	036	138	280	•	•	•																							•
Micro Blackout (available in wide width)	235	138	300	•																									•
Suri Natural Linen Effect (available in wide width)	161	138	320	•																									•
Cambric Light (available in wide width)	317	138	60	•																									•

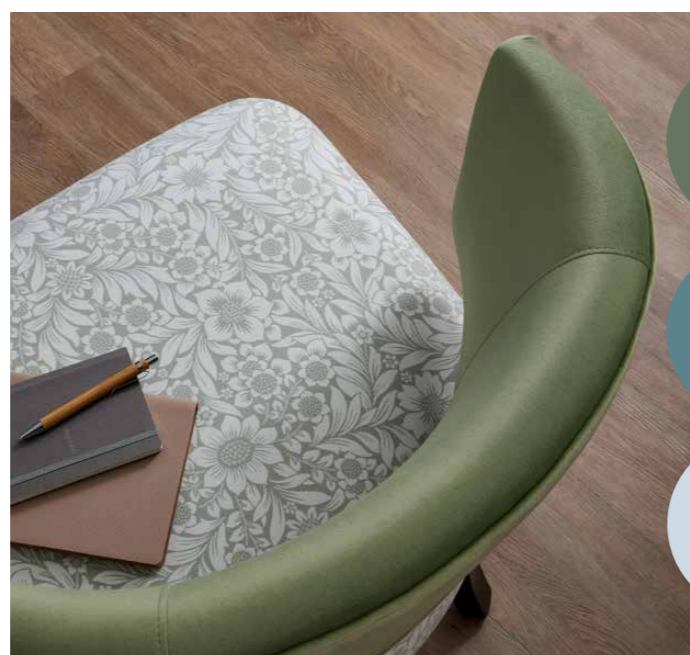
FLAME RETARDANT WIDE WIDTH BASECLOTH QUALITIES FOR CURTAINS, BEDDING AND ACCESSORIES

Minimum order quantity 10 metres on all wide width fabrics

Quality	Fabric ref.	Width Approx. cm	Weight g/m ² +/- 5%	Application							Technology	Flammability Ratings																		
				Window Curtains	Cubicle Curtains	Dimout Curtains	Blackout curtains	Sheer Curtains	Bedding: Duvet Covers, Sheets and Pillow Cases	Bedspreads		Accessories: Cushions	Anti-Microbial	Stain Resistant	BS5857 Part 2 Type C	BS5857 Part 2 Type B	BS7175 Ignition Source 7	EN13773	M1 France	M2 France	B1 Germany	NFPA 701 USA	Marine Standard Part 7	Marine Standard IMO 9						
Duo Blackout*	447	276	250	•																										•
Micro Blackout	335	276	300	•																										•
Textured Blackout	213	276	390	•																										•
Structured Blackout	299	280	325	•																										•
Satin Filament*	436	280	230	•	•																								•	
Suri Natural Linen Effect	397	276	320	•																										•
Cambric Light	437	280	60	•																										•

* These fabrics may be supplied printed on both sides with a surcharge, minimum order 50m. It is recommended that semi-plains only are printed on the reverse of 009. New 'Fabric References' may apply to Super Soft Dimout (360) and Satin Filament (099) if printed on both sides.

* These fabrics may be supplied printed on both sides. It is recommended that semi plains are printed on the reverse side.



Get In Touch

Call: +44 (0)1282 696969
e-mail: sales@panaz.co.uk
Visit: panaz.com

Keep In Touch





Panaz®

Head Office:
Panaz Ltd.
Bentley Wood Way
Hapton, Burnley
Lancashire. BB11 5ST
England
Tel: +44 (0)1282 696969
www.panaz.com

© Panaz own the copyright of all designs shown in this brochure, any infringement of which will be actioned by law.

Gardenia

Collection



Panaz®

www.panaz.com

Gardenia Collection



"To plant a garden is to believe in tomorrow"

Audrey Hepburn

Inspired by the natural patterns of the outdoors, Gardenia is a collection of curated prints that embrace the uplifting influences of the botanical world, in a range of tranquil colour stories.



Curtains Elvina 215 Elm, *Chair* Elisa 251 Eau De Nil, *Cushion* Dela 215 Elm.



Curtains Sophia 251 Eau De Nil, *Cushions* (starting at left back) Dela 108 Delph, Elisa 105 Indigo, Tiana 108 Delph, Dela 872 Flax (front), Dela 215 Elm (right).



Inspiration



Chairs Elisa 215 Eau De Nil (front), Dela 108 Delph, (back)
Cushion Tiana 108 Delph.



Inspiration



Sofa Luxe 215 Elm, *Cushions* (left to right) Elvina 215 Elm, Amante (Artemis Collection) 201 Jade, Dela 231 Olive, Elvina 203 Emerald, Amante 233 Pistachio (Artemis Collection) *Curtains* Elvina 215 Elm.

Chair Elisa 251 Eau De Nil, *Cushions* (front to back) Tiana 325 Lemon/Olive, Amante (Artemis Collection) 238 Citrus.



Curtains Elvina 108 Delph, *Cushions* (left to right) Dela 108 Delph, Dela 401 Amber, Elvina 108 Delph, Elisa 105 Indigo, Tiana 108 Delph (just seen). *Sofa* Marna 835 Hessian.



Inspiration

Gardenia

Collection

Elvina



Fabric Width: Approx. 138cm (54")
Height Repeat: Approx. 68.5cms (27")
Side Repeat: Approx. 68.5cms (27")

Elvina
108 Delph



Elvina 203 Emerald **Elvina** 215 Elm **Elvina** 426 Terracotta/Gold **Elvina** 325 Lemon/Olive

Elisa



Elisa 251 Eau De Nil **Elisa** 105 Indigo **Elisa** 467 Bordeaux **Elisa** 408 Terracotta **Elisa** 303 Lemon

Fabric Width: Approx. 138cms (54")
Height Repeat: Approx. 45.9cms (18")
Side Repeat: Approx. 22.8cms (9")

Gardenia

Collection

Sophia



Fabric Width: Approx. 138cms (54")
Height Repeat: Approx. 34.25cms (13.5")
Side Repeat: Approx. 34.25cms (13.5")

Sophia
251 Eau De Nil



Sophia 215 Elm **Sophia** 300 Gold **Sophia** 401 Amber **Sophia** 392 Lemon/Beige

Tiana

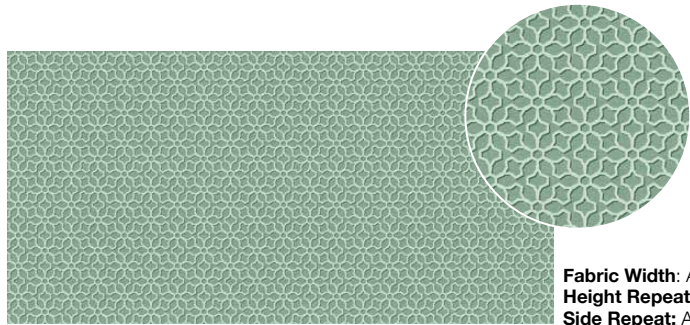


Tiana 835 Hessian **Tiana** 215 Elm **Tiana** 770 Nutmeg **Tiana** 108 Delph **Tiana** 325 Lemon/Olive

Fabric Width: Approx. 138cms (54")
Height Repeat: Approx. Nil
Side Repeat: Approx. 22.8cms (9")

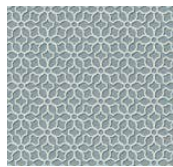
Gardenia Collection

Dela

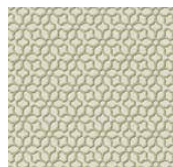


Fabric Width: Approx. 138cms (54")
Height Repeat: Approx. 4.4cms (1.7")
Side Repeat: Approx. 7.6cms (3")

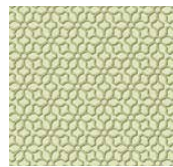
Dela
215 Elm



Dela
108 Delph



Dela
231 Olive



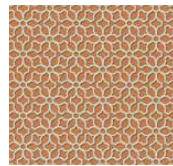
Dela
233 Pistachio



Dela
300 Gold



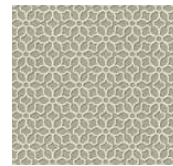
Dela
303 Lemon



Dela
401 Amber



Dela
770 Nutmeg



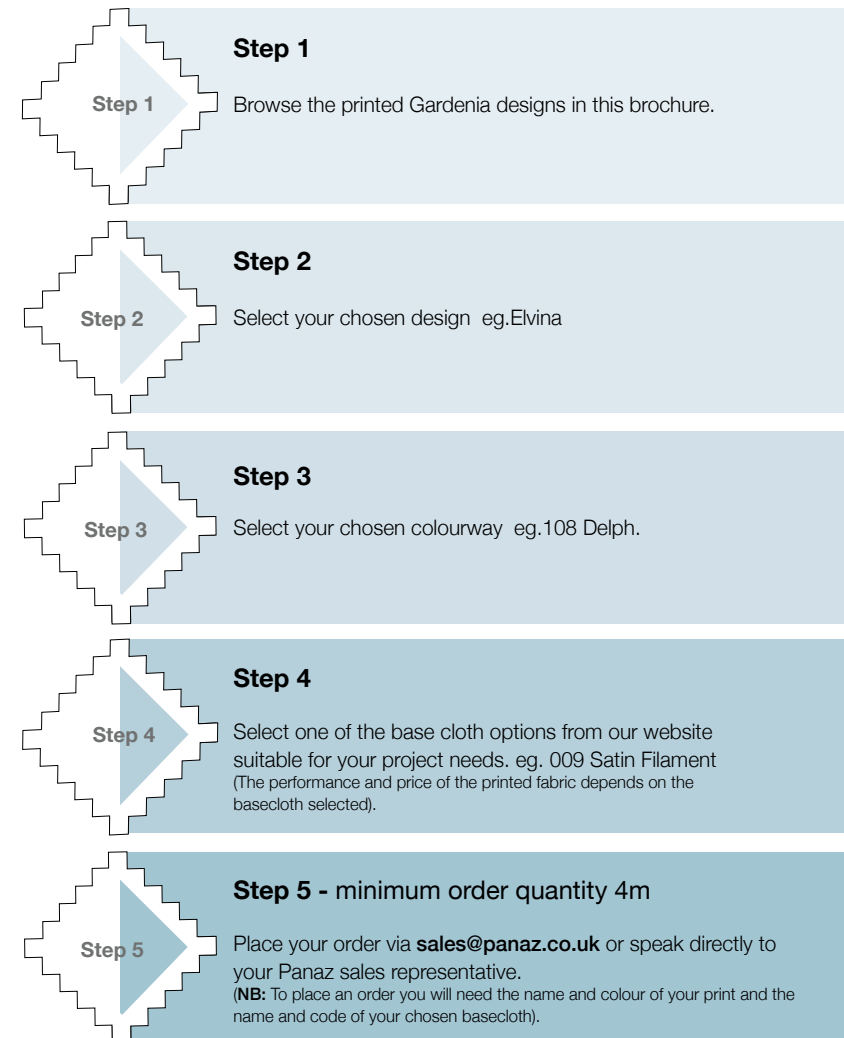
Dela
835 Hessian



Dela
872 Flax

Gardenia Collection

How to place your order



www.panaz.com 01282 696969 sales@panaz.co.uk

© Panaz own the copyright of all designs shown in this brochure, any infringement of which will be actioned by law.

Panaz Europe Ltd.
V. Malitah
Mediterranean Street
The Village
St. Juliens
STJ 1870
Malta
Tel: 00356-27780052
email: admin@panaz.com

Head Office
Panaz Ltd.
Bentley Wood Way
Hapton, Burnley
Lancashire. BB11 5ST
England
Tel: +44 (0)1282 696969

Panaz USA Inc.
Access Office Business
Center
8801 Fast Park Drive
Suite 301
Raleigh, NC 27617
USA
Tel: +1 919 747 8211
email: sales@panaz.com

